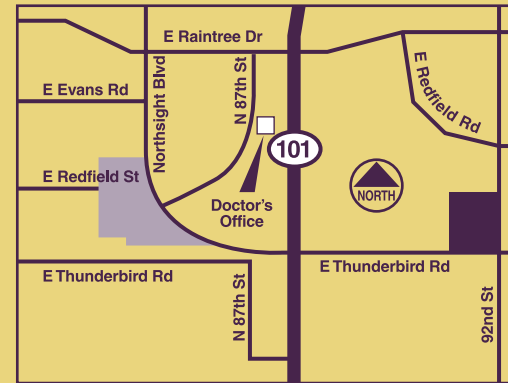


Thank you for choosing Paul M. Petelin, Jr., M.D. for your eye care needs. Our mission is to provide state-of-the-art medical and surgical eye care in a professional and caring environment. We appreciate your confidence and trust in us.

You have been diagnosed as having a cataract, one of the most common causes of reversible vision loss. It is important to have a full understanding about this condition to make an informed decision on how best to deal with your situation. We are happy to provide this brochure to educate you on cataracts and treatment options.

#### SCOTTSDALE OFFICE



14275 North 87th Street, Ste. 112  
Scottsdale, AZ 85260  
Phone: 480.483.8882 • Fax: 480.563.1413

#### SUN LAKES OFFICE



25237 S. Sun Lakes Blvd., Ste. 1  
Sun Lakes, AZ 85260  
Phone: 480.895.8900 • Fax: 480.895.5657



*Evaluation and Treatment of*



# CATARACTS

Most people develop cataracts as they age. Cataracts are a clouding of the lens that impairs the focusing ability of the eye. This often leads to blurred vision. Paul M. Petelin, Jr., M.D. specializes in reversing the effects of cataracts and restoring your vision.

[www.scottsdalecenterforsight.com](http://www.scottsdalecenterforsight.com)

## WHAT IS A CATARACT?

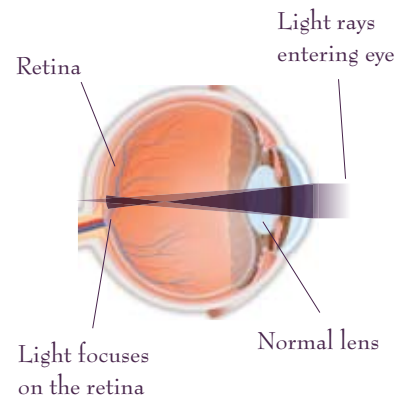
A cataract is a clouding of the natural lens of the eye. In its normal state, the lens is crystal clear and is responsible for focusing images of what we look at onto the retina, the sight-sensitive nerve tissue layer inside of the eye responsible for vision. If the lens becomes cloudy with cataract formation, those light rays are not focused clearly and blurred vision results.

Cataracts generally represent a normal aging change in the lens. In some instances, previous trauma, systemic illnesses or medications can hasten the formation of cataracts, as can heredity. Regardless of age, cataracts are managed the same.

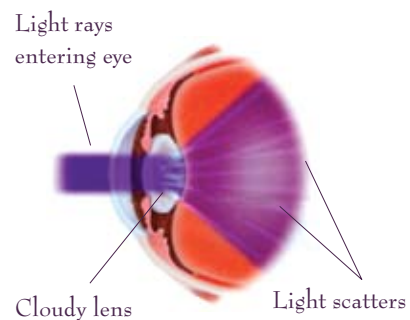
## DIAGNOSIS

The only way to diagnose a cataract is through a thorough eye examination. It is important to establish that there are no other concurrent conditions causing blurred vision, so that appropriate treatment options can be pursued.

LIGHT RAYS ENTERING AN EYE WITH A NORMAL LENS



LIGHT RAYS ENTERING AN EYE WITH A CATARACT. WHEN A CATARACT FORMS, THE LENS OF YOUR EYE IS CLOUDY. LIGHT CANNOT PASS THROUGH IT EASILY, AND YOUR VISION IS BLURRED.



## SYMPTOMS

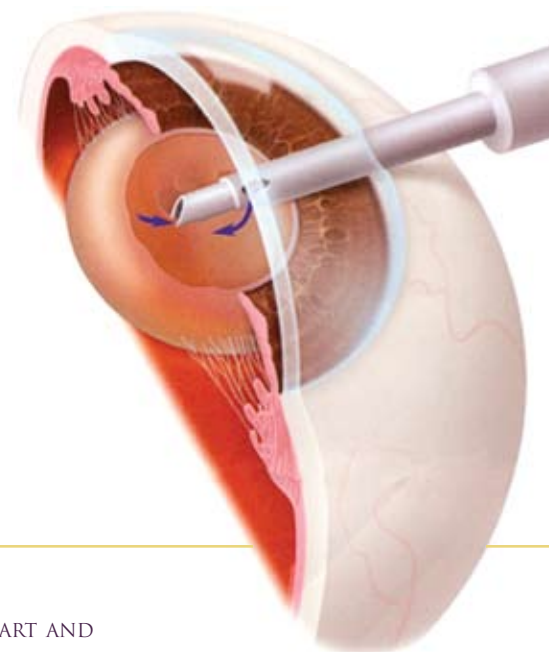
- Blurred or hazy vision
- Difficulty reading or doing close work
- Glare, halos or starbursts around lights
- Loss of depth perception
- Trouble seeing road signs or TV captions

## TREATMENT OPTIONS

Early on, as cataracts begin to form, vision can often be improved by prescribing glasses or by updating your prescription. As long as your vision does not limit your ability to perform your activities of daily living, surgery is not necessary.

With advancement of cataracts, even a change in glasses will not enable you to see 100 percent. When that interferes with your ability to do the things you want to do, or need to do, surgery is usually recommended. Common reasons to proceed with surgery include difficulty seeing to drive, read, perform work-related tasks or sports activities. Glare symptoms affecting night driving or activities are also a common reason to justify surgery.

DURING CATARACT SURGERY, TINY INSTRUMENTS ARE USED TO BREAK APART AND REMOVE THE CLOUDY LENS FROM THE EYE.



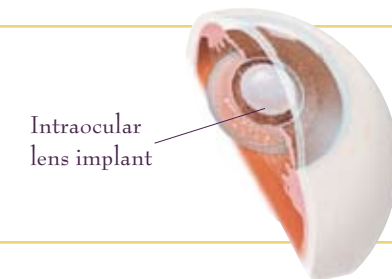
## CATARACT SURGERY

Cataract surgery involves the removal of the cloudy cataract from the eye. The procedure is done on an outpatient basis under topical or local anesthesia, taking less than 15 minutes in most instances. The cataract is removed from the eye utilizing advanced techniques and replaced with an artificial lens called an intraocular lens implant (IOL). Replacing the clouded lens with the clear IOL enables the eye to see more clearly.

Following surgery, you will be asked to use eye drops to prevent infection and to promote proper healing. Most patients will notice the improvement in eyesight within a day or so, and may return to normal activities the day after surgery. Several post-op visits will be scheduled to monitor the healing process, and the determination for the need for new glasses is made about one month following surgery.

IN CATARACT SURGERY, THE INTRAOCULAR LENS REPLACES THE EYE'S NATURAL LENS.

INTRAOCULAR LENS (IOL) IMPLANT.



## SURGERY SCHEDULING

Once a decision has been made to proceed with cataract surgery, careful measurements will be taken to determine the appropriate lens implant power to use. You will be involved in the decision on how best to address your vision needs. In addition, our financial counselors will verify insurance and/or Medicare benefits and inform you regarding covered services and what your financial responsibility will be.

We are pleased that you have chosen Dr. Paul M. Petelin, Jr., M.D. for evaluation and treatment of your cataract condition. If you have further questions, please feel free to contact us.